

SECTION THROUGH SCOUR PIPE TRENCH



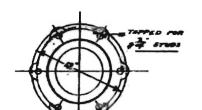
MINIMUM DEPTH OF PUDDLE TRENCH 2'-6"

SELECTED IMPERVIOUS MATERIAL

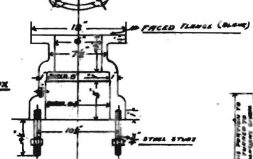
NATURAL SURFACE DEPTH OF STRIPPING LEVEL FOR EMBANKMENT

BOTTOM OF PUDDLE TRENCH TO HAVE A FALL OF 1" IN 10' FEET

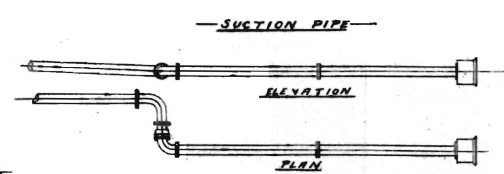
POINT OF MOUND TO BE MADE OF VALUABLE GROUND FILL WITH CHIPPED STONE



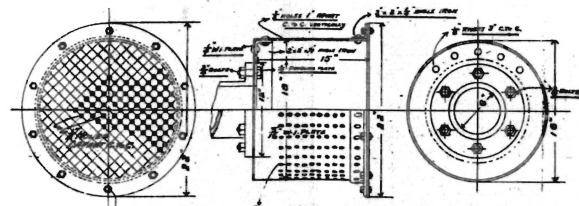
C.I. STUFFING BOX



SWIVEL BEND FOR SUCTION PIPE



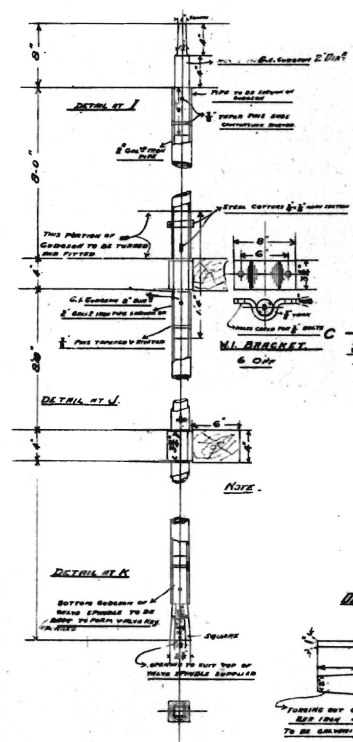
SUCTION PIPE



6\"/>

NOTE: THE SCOUR PIPE WILL BE SUPPLIED FROM BRISBANE STOP VALVE. SPECIAL CASTINGS AND FITTINGS WILL BE SUPPLIED BY WILKINSON'S & HORTONWOOD.

NOTE: GRADE FOR PUMP NOT SUPPLIED WITH ORDER 8970



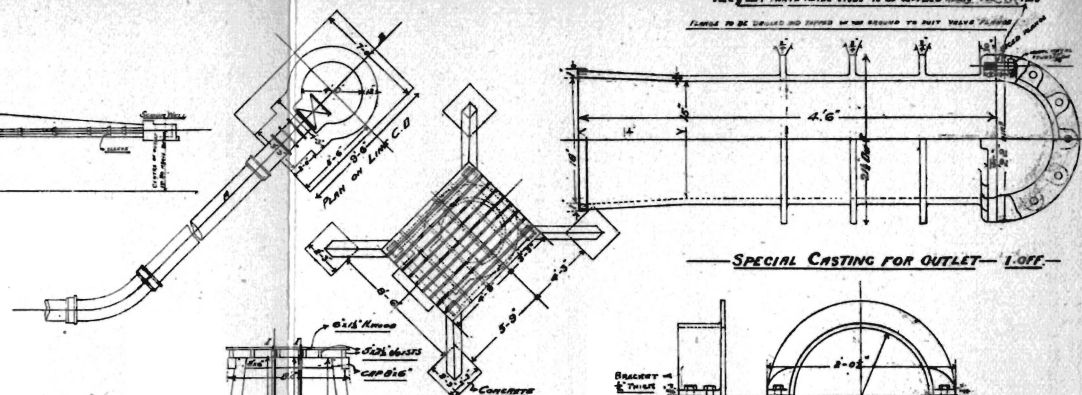
DETAIL AT I

DETAIL AT J

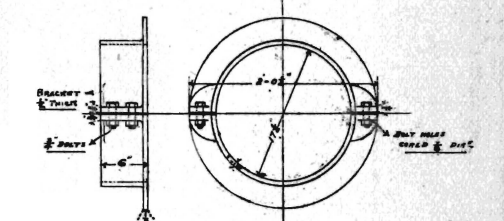
DETAIL AT K

DETAIL AT L

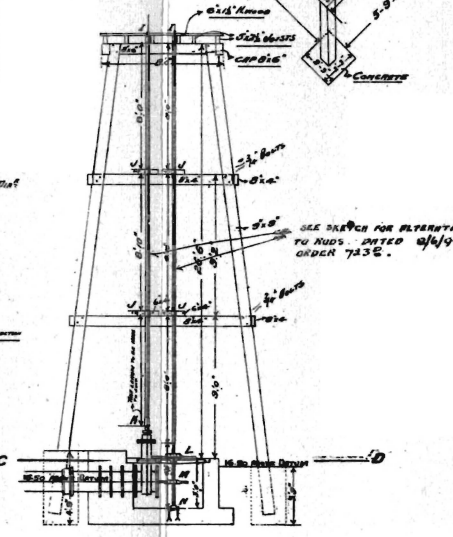
DETAIL AT M



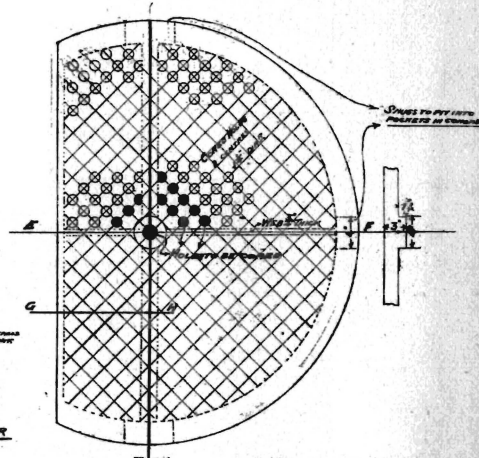
SPECIAL CASTING FOR OUTLET - 1 OFF



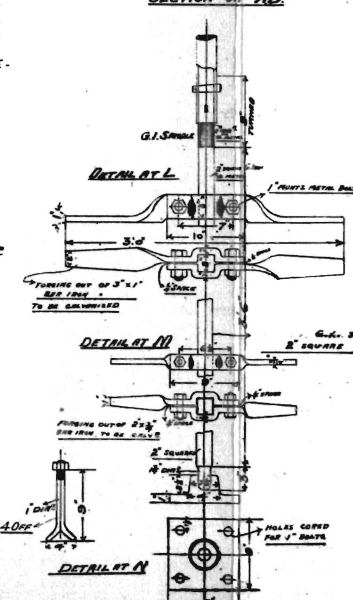
C.I. SLEEVE FOR SCOUR PIPE - 50 OFF



SECTION ON AB



PLAN CAST IRON COVER FOR SCOUR WELL - 1 OFF



DETAIL AT N

DETAIL AT O

DETAIL AT P

DETAILS OF SCOUR WELL PIPE & FITTINGS FOR STORAGE RESERVOIR CHILDEARS MILL C.S.R.C.L. 12