

MARRICKVILLE LOW LEVEL PUMPING ENGINES.

Results of Duty Trials made on July 19th and 24th, 1900.

Data:—From Readings taken every 15 Minutes.	"B" Engine, July 19th.	"A" Engine, July 24th.
Duration of Trial	12 hours	12 hours
Total number of revolutions	10,910	10,593
Average " " " " per minute	15.15	1.471
Indicated horse power, high pressure cylinder	25.704	22.39
" " " " low " " " "	20.107	20.35
Total indicated horse power of engine	45.811	42.74
Total head in feet, including friction	41.34	40.89
Weight allowed for cubic foot of sewage	63.5 pounds	63.5 pounds
Capacity of pump plungers per revolution	29.45 cubic feet	29.45 cubic feet
Work done by " " " " in 12 hours	77,315.46 foot pounds	76,473.85 foot pounds
Pump horse power	843,511,681 " "	810,087,546 " "
Water from hot well in 12 hours	35.5	34.1
" " jackets " " " "	12,897 pounds	14,618 pounds
" " economiser engine " " " "	1,837 " "	1,837 " "
" " leaks in 12 hours (say)	480 " "	480 " "
Total water evaporated	150	150
Total steam consumption	15,364 " "	17,085 " "
Steam consumption per pump horse power per hour	14,734 " "	16,455 " "
Total coal consumed in 12 hours	34.58 " "	40.21 " "
Water evaporated per pound of coal	14 cwt.=1568 " "	13 cwt.=1456 " "
Efficiency of mechanism	9.79 " "	11.73 " "
Duty in foot pounds per 112 pounds of coal77 " "	.79 " "
Coal consumed per indicated horse power per hour	60,250,834 " "	62,314,426 " "
	2.85 " "	2.83 pounds

MARRICKVILLE LOW LEVEL PUMPING STATION.

CARDS FROM THE HIGH PRESSURE CYLINDER.

JULY 24th, 1900.

JULY 24th, 1900.

Diameter of Cylinder 15 inches; Stroke 36 inches; Piston Rod, front end 3 inches, back end 4 inches; Throttle full open. Pressure by gauge on Boiler 95 lbs. Pressure by gauge at Throttle 95 lbs. Vacuum by gauge on Condenser 27 inches. Temperature of feed at boiler 150° F. Revolutions per minute 14.71. Cards No. 10.

Diameter of Cylinder, 15 inches; Stroke, 36 inches; Piston Rod, front end, 3 inches, back end, 4 inches. Throttle full open. Pressure by gauge on Boiler, 96 lbs. Pressure by gauge at Throttle, 95 lbs. Vacuum by gauge on Condenser, 27 inches. Temperature of feed at boiler, 160° F. Revolutions per minute, 14.71. Cards No. 10.

Scale of Cards 60. Crosby Indicators.

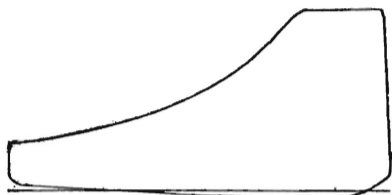
Scale of Cards 60. Crosby Indicators.

FRONT END.

FRONT END.

Area 2.99 sq. in. Length 3.46 in. M.E.P. 51.85 lbs. Cut off 2 1/10.

Area 2.99 sq. in. Length 3.46 in. M.E.P. 51.85 lbs. Cut off 2 1/10.

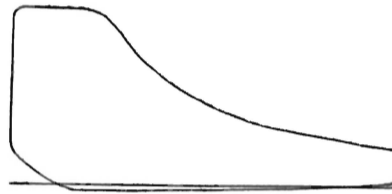
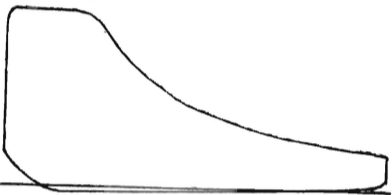


BACK END.

BACK END.

Area 2.98 sq. in. Length 3.46 in. M.E.P. 51.67 lbs. Cut off 2 1/10.

Area 2.98 sq. in. Length 3.46 in. M.E.P. 51.67 lbs. Cut off 2 1/10.



CARDS FROM THE LOW PRESSURE CYLINDER.

JULY 24th, 1900.

CARDS FROM THE LOW PRESSURE CYLINDER.

JULY 24th, 1900.

Diameter of Cylinder, 30 inches; Stroke, 36 inches; Piston Rod, 4 inches; Throttle full open. Pressure by gauge on boiler 96 lbs. Pressure by gauge at Throttle 95 lbs. Vacuum by gauge on Condenser, 27 inches. Temperature of feed at boiler 160° F. Revolutions per minute, 14.71. Cards No. 10.

Diameter of Cylinder, 30 inches; Stroke, 36 inches; Piston Rod, 4 inches. Throttle full open. Pressure by gauge on Boiler, 96 lbs. Pressure by gauge at Throttle, 95 lbs. Vacuum by gauge on Condenser, 27 inches. Temperature of feed at Boiler, 160° F. Revolutions per minute, 14.71. Cards No. 10.

Scale of Cards 12. Crosby Indicators.

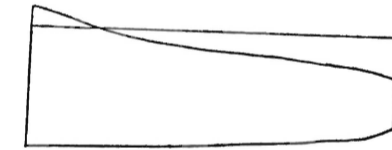
Scale of Cards 12. Crosby Indicators.

BACK END.

BACK END.

Area 2.88 sq. ins. Length 3.31 ins. M.E.P. 10.74 lbs. Cut off, 9/10.

Area 2.88 sq. ins. Length 3.31 ins. M.E.P. 10.74 lbs. Cut off 9/10.



FRONT END.

FRONT END.

Area 3.01 sq. ins. Length 3.35 ins. M.E.P. 10.78 lbs. Cut off, 9/10.

Area 3.01 sq. ins. Length 3.35 ins. M.E.P. 10.78 lbs. Cut off 9/10.



CARDS FROM THE HIGH PRESSURE CYLINDER.

JULY 19th, 1900.

CARDS FROM THE HIGH PRESSURE CYLINDER.

JULY 19th, 1900.

Diameter of Cylinder, 15 inches; Stroke, 36 inches; Piston Rod, front end, 3 inches, back end, 4 inches; Throttle full open. Pressure by gauge on boiler, 96 lbs. Pressure by gauge at Throttle, 95 lbs. Vacuum by gauge on Condenser, 27.75 inches. Temperature of feed at Boiler, 160° F. Revolutions per minute, 15.15. Cards No. 4.

Diameter of Cylinder, 15 inches; Stroke, 36 inches; Piston Rod, front end 3 inches, back end 4 inches; Throttle full open. Pressure by gauge on Boiler, 96 lbs. Pressure by gauge at Throttle, 95 lbs. Vacuum by gauge on Condenser, 27.75 inches. Temperature of feed at Boiler, 160° F. Revolutions per minutes, 15.15. Cards No. 4.

Scale of Cards, 60. Crosby Indicators.

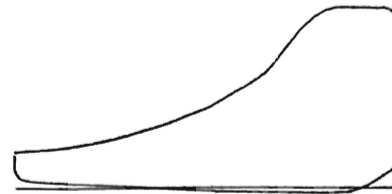
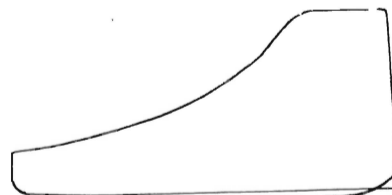
Scale of Cards 60. Crosby Indicators.

FRONT END.

FRONT END.

Area 3.42 sq. in. Length 3.43 in. M.E.P. 59.82 lbs. Cut off 2 1/10.

Area 3.42 sq. ins. M.E.P. 59.82 lbs. Length, 3.43 ins. Cut off 2 1/10.

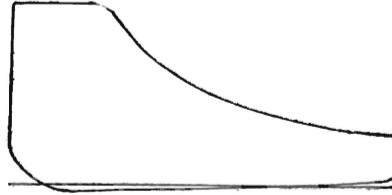
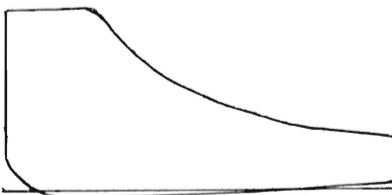


BACK END.

BACK END.

Area 3.50 sq. in. Length 3.52 in. M.E.P. 59.65 lbs. Cut off 2 1/10.

Area 3.50 sq. ins. Length 3.52 ins. M.E.P. 59.65 lbs. Cut off 2 1/10.



CARDS FROM THE LOW PRESSURE CYLINDER.

JULY 19th, 1900.

CARDS FROM THE LOW PRESSURE CYLINDER.

JULY 19th, 1900.

Diameter of Cylinder, 30 inches; Stroke, 36 inches; Piston Rod 4 inches. Throttle full open. Pressure by gauge on Boiler, 96 lbs. Pressure by gauge at Throttle, 95 lbs. Vacuum by gauge on Condenser, 27.75 inches. Temperature of feed at Boiler, 160° F. Revolutions per minute, 15.15. Cards No. 4.

Diameter of Cylinder, 30 inches; Stroke 36 inches; Piston Rod 4 inches; Throttle full open. Pressure by gauge on Boiler 96 lbs. Pressure by gauge at Throttle 95 lbs. Vacuum by gauge on Condenser 27.75 inches. Temperature of feed at Boiler 160° F. Revolutions per minute 15.15. Cards No. 4.

Scale of Cards, 12. Crosby Indicators.

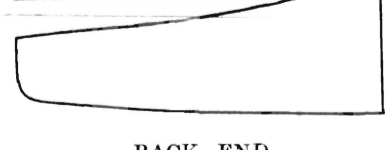
Scale of Cards 12. Crosby Indicators.

FRONT END.

FRONT END.

Area 2.88 sq. in. Length 3.33 ins. M.E.P. 10.37 lbs. Cut off, 9/10.

Area 2.88 sq. ins. Length 3.33 ins. M.E.P. 10.37 lbs. Cut off 9/10.



BACK END.

BACK END.

Area 2.76 sq. in. Length 3.34 ins. M.E.P. 9.91 lbs. Cut off 9/10.

Area 2.76 sq. ins. Length 3.34 ins. M.E.P. 9.91 lbs. Cut off 9/10.

