

# PLATE XVII.

STATION GROUP	COLORS	SHIPPING MARKS
A	RED	A
B	BLACK	B
C	BLUE	C
COMMON	WHITE AND RED STRIP	A A
SHIPPING MARKS	WHITE AND RED STRIP	⊠
D	GREEN	D
E	YELLOW	E
F	BROWN	F
COMMON	WHITE AND BROWN STRIP	D D
SHIPPING MARKS	WHITE AND BROWN STRIP	⊠
G	RED & BLACK	G
H	RED & GREEN	H
I	RED & YELLOW	I
COMMON	WHITE, RED AND BROWN STRIP	G G
SHIPPING MARKS	- DD - DD -	⊠
J	BLACK & GREEN	J
K	BLACK & BLUE	K
L	BLACK & YELLOW	L
M	BLACK & BROWN	M
COMMON	WHITE, BLACK AND BROWN STRIP	A A
SHIPPING MARKS	- DD - DD -	⊠

STATION GROUP	COLORS	SHIPPING MARKS
N	YELLOW AND BROWN	N
O	YELLOW AND BLUE	O
COMMON	WHITE, YELLOW AND BROWN STRIP	N N
SHIPPING MARKS	- DD - DD -	⊠
P	BLUE & RED	P
Q	BLUE & YELLOW	Q
COMMON	WHITE, BLUE AND BROWN STRIP	P P
SHIPPING MARKS	- DD - DD -	⊠
R	BROWN & BLACK	R
S	BROWN & RED	S
COMMON	WHITE, BROWN AND BROWN STRIP	R R
SHIPPING MARKS	- DD - DD -	⊠
T	GREEN & BLUE	T
U	GREEN & BROWN	U
COMMON	WHITE, GREEN & BLUE	T T
SHIPPING MARKS	- DD - DD -	⊠

— 2005-100 — BLUE & RED — 20"  
 — 2005-100 — BLUE & BROWN — 18"  
 — COLOURED WHITE SUPPLY  
 — SHIPPING MARKS

**COMMON:** THIS MEANS ALL SUCH PARTS AS ARE COMMON TO THE ENTIRE STATION, USE WHO IS FOR WHO, INCLUDE THE CHIMNEY, SUPERHEATER, CONDENSER, AUXILIARY FEED PUMPS, BOILERS, PLY, SHIPBOARD, KEYS, WRENCHES, ETC.

**SHIPPING MARKS:** ALL CONTRACTORS, "S.S. P. 1015 ETC.

**COLORS:** THESE ARE TO BE AS BRIGHT AS POSSIBLE, WHERE ONE COLOUR IS GIVEN, THE WHOLE END OR SIDE OF A CASE SHOULD BE PAINTED WITH IT, TWO COLOURS ARE TO BE 1" : 3" THE WHOLE FACE OR END SHOULD BE PAINTED WITH THE COLOUR AND BE IN THE STRIPS.

**STRIPES:** THE STRIPES ARE TO BE AT 1 1/2" APART AND PAINTED OVER THE COLOURS ONLY, AS A BODY COLOUR.

**LETTERS:** THESE ARE TO BE CAPITAL LETTERS (BLACK) AT LEAST 6" HIGH.

FURTHER, EACH CASE IS TO BE NUMBERED CONSECUTIVELY.

THE SHIPPING MARKS IN ADDITION TO BEING PAINTED ARE TO BE STAMPED ON 1" STRIPS WHICH ARE TO BE TACKED ON TO THE CASE.

UNLESS SO PRECISED OTHERWISE ARE THE PARTS OF ANY ONE GROUP TO BE PAINTED IN THE TRADE OF ANOTHER GROUP. THE PARTS OF EACH GROUP ARE TO BE PAINTED IN THEIR OWN CASES AND MARKED WITH THEIR GROUP NUMBER AND COLOUR.

ALL PARTS OF THE MACHINERY NOT ENCLOSED IN PLATING CASES ARE TO BE PAINTED WITH THEIR PROPER GROUP COLOUR AND SHIPPING MARKS.

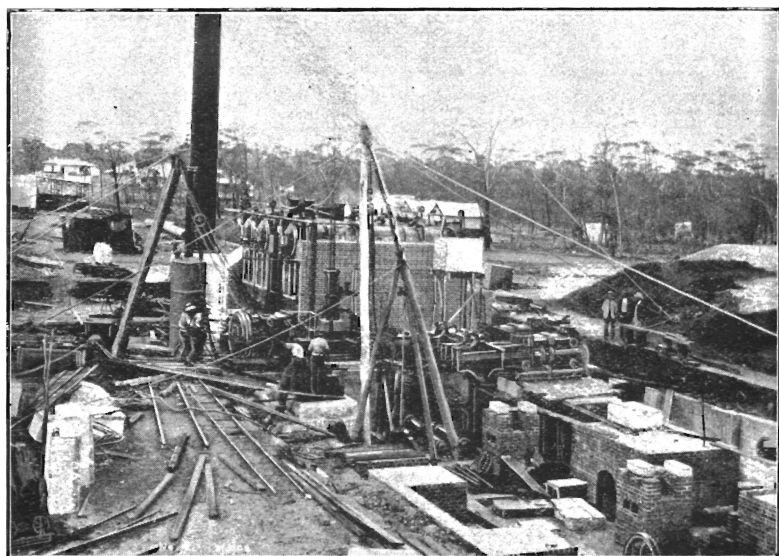


Fig. 2.